

## 100 Miler July 26, 2025

### SAILING INSTRUCTIONS

#### 1. SIGN IN:

- 1.1 Friday July 25, 2025, 1100 to 1600 hours. A boat representative **SHALL** check in or may be subject to not being scored. Phone sign in from 1600 to 1800 hours may be allowed by Race Officials if they are contacted at **906.290.4970**. Registration is inside M & M Yacht Club.
- 1.2 Notices to Competitors will be posted on the Notice Board outside of the main entrance to M & M Yacht Club and at Yacht Scoring: [https://www.yachtscoring.com/notice\\_board/50082](https://www.yachtscoring.com/notice_board/50082)

#### 2. SIGNALS MADE ASHORE

Signals made ashore will be displayed from the flagpole at M & M Yacht Club. If a postponement is signaled ashore, the first warning signal will be made not less than one hour after the AP flag is lowered. This changes Race Signal AP. Signals displayed from the Menominee Marina breakwall shall not be considered as made ashore.

#### 3. SCHEDULE and CLASS FLAGS

- 3.1 Skipper's meeting will be held at M & M Yacht Club at 1745 hours on Friday, July 25, 2025.
- 3.2 Class breaks and start times will be distributed at the Skipper's Meeting.
- 3.3 Each class will be assigned a number, which will be represented by the appropriate numeric code flag, for the Race Committee to display as Class Start notification on the Committee boat.

#### 4. CHECK IN

- 4.1 Check-in shall be on the south end of the outer break wall. Code "L" flag shall be displayed to indicate check-in point.
- 4.2 Each boat competing **SHALL** check in prior to their start.
- 4.3 Failure to check in will result in DNS (did not start) and will not be scored.

#### 5. THE START

- 5.1 The starting area will lie east of the Menominee breakwall.
- 5.2 The starting line will be between an orange flag on the Race Committee boat and a 10' x 6' white inflated mark with reflecting letters 'LMPHRF' around it and a flashing white strobe, which must be kept to **STARBOARD**.
- 5.3 A limit mark will be attached to the Race Committee boat. A boat that touches the limit mark, the Committee boat, or passes between the limit mark and Committee boat shall be considered to have touched the starting mark. This changes Rule 31.
- 5.4 The race will start using the Rule 26 system.
- 5.5 There will be a five (5) minute delay between the starting signal for each class and the warning signal for the following class's start.
- 5.6 If a class is placed under general recall, the class restart shall be held after the last scheduled start.
- 5.7 **OVER EARLY:** Boats on the course side of the starting line before their starting signal will be scored OCS and will have an additional 15 minutes added to their corrected time. This changes RRS Appendix A 5.1 and A 10.
- 5.8 **WRONG CLASS START:** If a boat starts in an earlier class, they will be scored as DNS (Did Not Start).
- 5.9 **STARTING AREA RESTRICTION:** The starting area shall be defined as all waters west of a line extending from the Menominee North Pierhead Light through the starting Race Committee boat, to the shoreline north-northwest of said RC Boat. Racing boats shall stay East of the start area until 5 minutes prior to their scheduled warning.

#### 6. COURSE and MARKS

Courses and Marks shall be as described in attached Appendix A, not to be used for navigation.

## **7. THE FINISH**

- 7.1 The Finish line will be between an Orange flag on the north end of the Menominee Marina breakwall (45 °06.550'N, 087°36.204'W) and a 10' x 6' white inflated mark with reflecting letters 'LMPHRF' around it and flashing white strobe. Leave the mark to **PORT** as you cross the finish line.
- 7.2 Boats finishing after sunset SHALL hail race committee on VHF 78A or text to **906.290.4970** in case of interference, 10 minutes prior to finishing with boat name and sail number.

## **8. TIME LIMIT and WITHDRAWAL FROM RACE.**

- 8.1 There is no time limit. Boats finishing after 2100 hours shall record their own time, as well as the names of boats finishing ahead and behind them, reporting this information to the Race committee.
- 8.2 Boats withdrawing shall call or text **906.290.4970**.

## **9. COMMUNICATION**

- 9.1 Rule 41(c) is changed to read as follows: Help in the form of information freely available to all yachts and any publicly offered internet broadcast weather information from sources available to all competitors is allowable. Allowable services must provide the same information to all and not provide boat-specific weather or route information. Accessing other data during the race will be considered a violation of Rule 41.
- 9.2 Race Committee **MAY** provide courtesy broadcasts on **VHF 78A**. Boats shall not transmit on this channel except as required by SI 7.2. Be advised that this channel may show up as 1078 on some devices.

## **10. PROTESTS**

- 10.1 Protests shall be filed inside M & M Yacht Club.
- 10.2 Protests shall be submitted on a US Sailing protest form.
- 10.3 Protests shall file any protest within two (2) hours of the protestor's finishing time.
- 10.4 Hearing time and place will be on either the official notice board or Yacht Scoring Event site shall constitute notice as required in Rule 63.2.

## **11. SCORING**

- 11.1 The race will be scored using MWPHRF DHCP Time on Time. Course distances for scoring purposes will be as stated in Appendix A.
- 11.2 Overall Winners will be the yachts with the fastest corrected time in each class. Division winners will also be recognized and awarded.

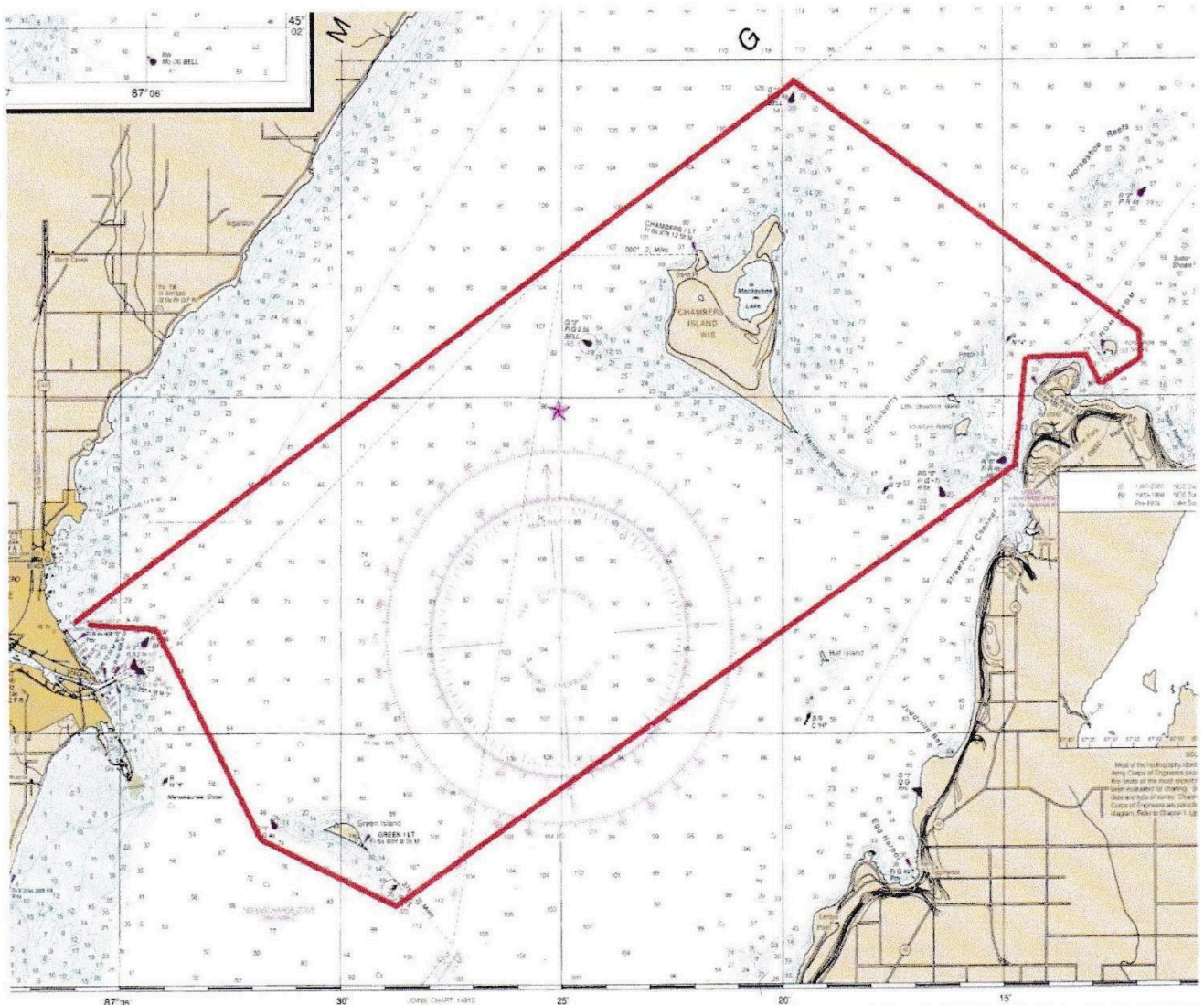
## **12. RACE OFFICIALS**

Event Chair, M&M Yacht Club Vice Commodore of Sail: Dan McVane.  
Principal Race Officer: Cyndi McKesson, US Sailing Certified Race Official.  
Chief Judge: Tom Atkins, US Sailing Certified Race Officer.

## APPENDIX A – COURSES TO BE SAILED - Courses should not be used as charts

### A1. Spinnaker Yachts – 41.8 nm

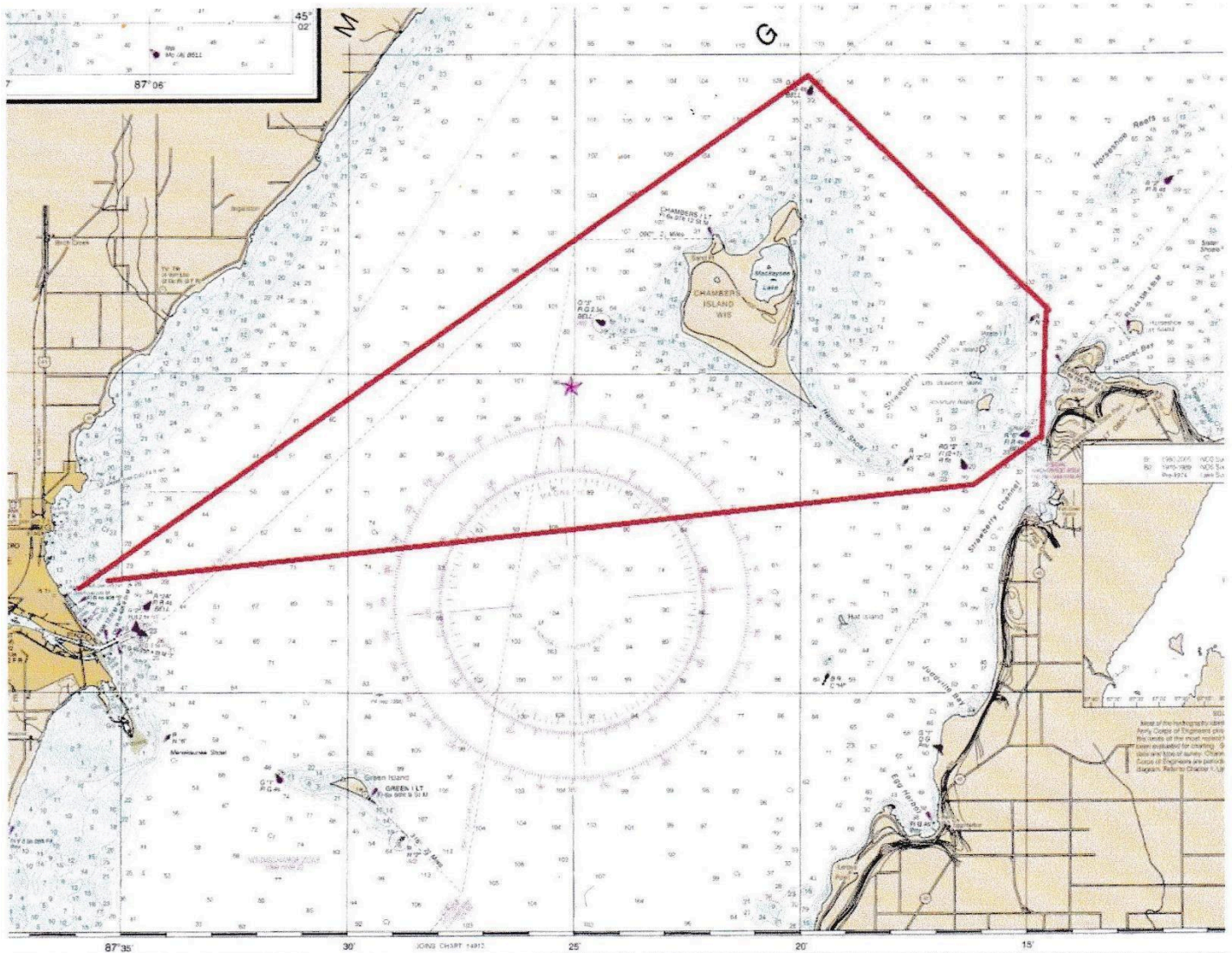
- After the start, proceed in an easterly direction leaving Menominee Shoal Buoy R “2A” to Starboard.
- Continue southeasterly leaving Green Island and its buoys G “1” and R N “2” to Port.
- Continue northeasterly to the western shore of Door County. Leave Fish Creek Buoy R “6” to Port.
- Proceed around Eagle Bluff, leaving it to Starboard.
- Proceed around Horseshoe Island, leaving it to Port.
- Continue northwesterly around the northern side of Chambers Island and North Chambers Island Buoy G “1”, leaving both to Port.
- Proceed to finish as described in SI 8.



COURSE MAPS ARE APPROXIMATE REPRESENTATIONS. REFER TO THE COURSE DESCRIPTION FOR PROPER SAILING.

## A2. Non-Spinnaker Yachts - 35.8 nm

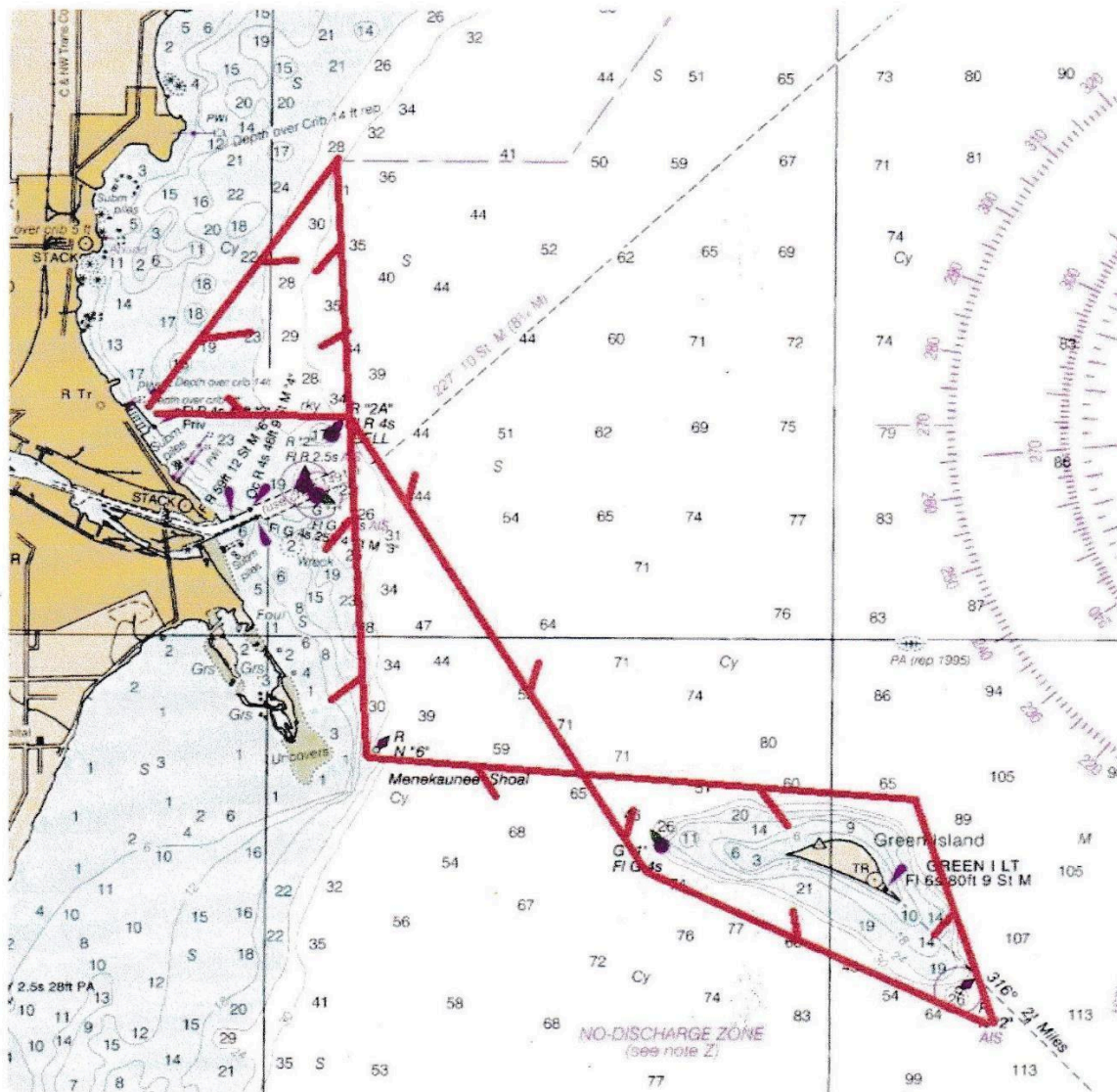
- After the start, proceed to the western shore of Door County, leaving both Fish Creek Buoy RG "S" and R N "6" to Port.
- Take special care to avoid the shallows around Hanover Shoal and R N "2"
- Continue north to Eagle Bluff Buoy R "4", leaving it to Port.
- Next, proceed northwesterly to the North Chambers Island Buoy G "1", leaving both the island and the buoy to Port.
- Finally, proceed southwesterly to the finish as described in SI 8.



**COURSE MAPS ARE APPROXIMATE REPRESENTATIONS. REFER TO THE COURSE DESCRIPTION FOR PROPER SAILING.**

**A3. Non-Spinnaker Small Boats – 17.0 nm**

- After the start, proceed easterly to Menominee Shoal Buoy R “2A”, leaving it to Starboard.
- Next, proceed to Green Island West Shoal Buoy G “1”, and leave it to Port.
- Continue to round Green Island and its East Shoal Buoy R “1”, leaving both to Port.
- Proceed to Menekaunee Shoal Buoy R N “6”, and leave it to Starboard. Note the shallows between this mark and Seagull Bar.
- Next, proceed past Menominee Shoal Buoy R “2A” to the M&M YC Henes Park Buoy (45°08.136' N, 087°34.465' W), leaving both to Port.
- Finish as described in SI 8.



**COURSE MAPS ARE APPROXIMATE REPRESENTATIONS. REFER TO THE COURSE DESCRIPTION FOR PROPER SAILING.**