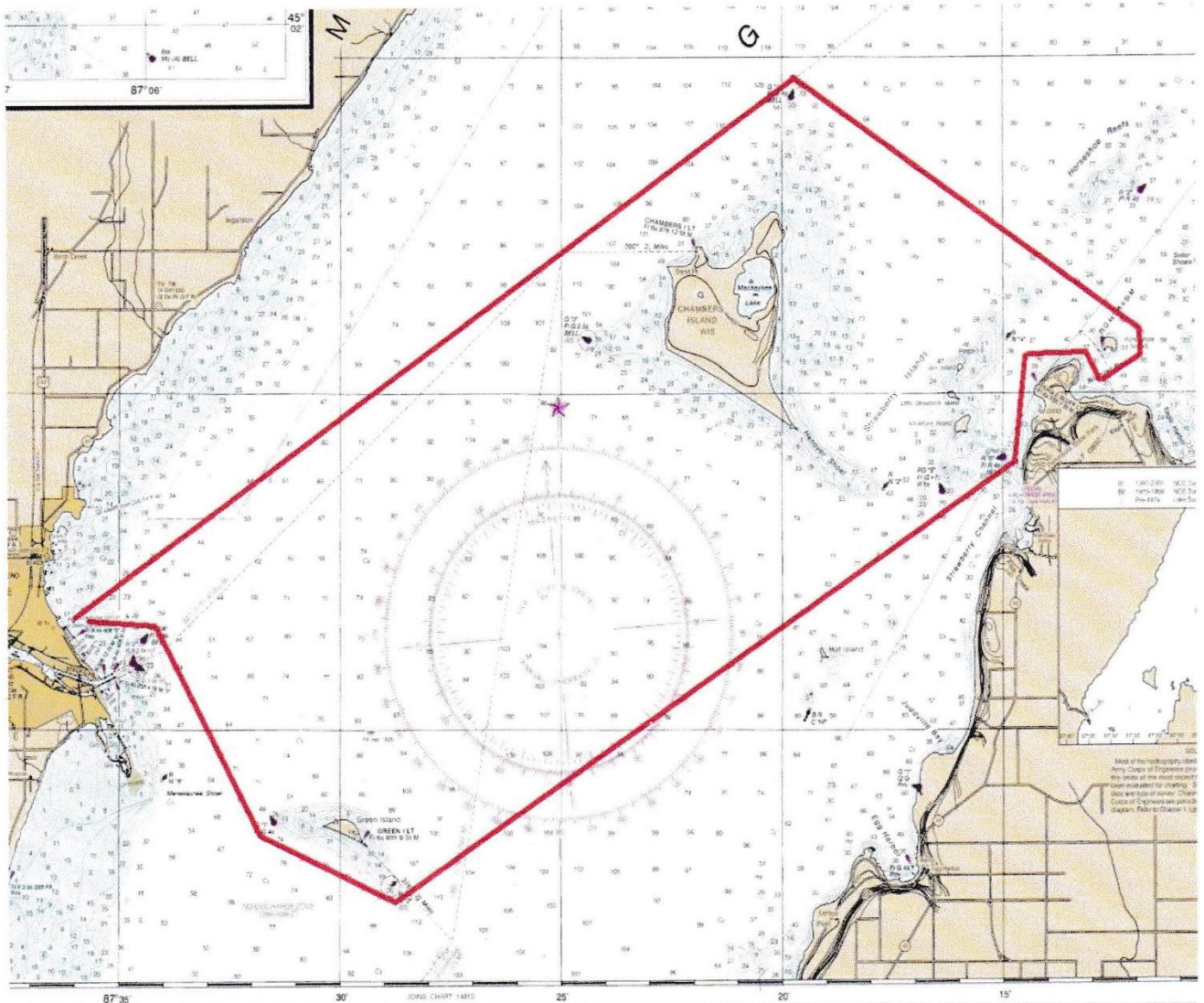




APPENDIX A – COURSES TO BE SAILED

A1. Spinnaker Yachts – 41.8 nm

- After the start, proceed in an easterly direction leaving Menominee Shoal Buoy R “2A” to Starboard.
- Continue southeasterly leaving Green Island and its buoys G “1” and R N “2” to Port.
- Continue northeasterly to the western shore of Door County. Leave Fish Creek Buoy R “6” to Port
- Proceed around Eagle Bluff, leaving it to Starboard.
- Proceed around Horseshoe Island, leaving it to Port.
- Continue northwesterly around the northern side of Chambers Island and North Chambers Island Buoy G “1”, leaving both to Port.
- Proceed to finish as described in SI 8.

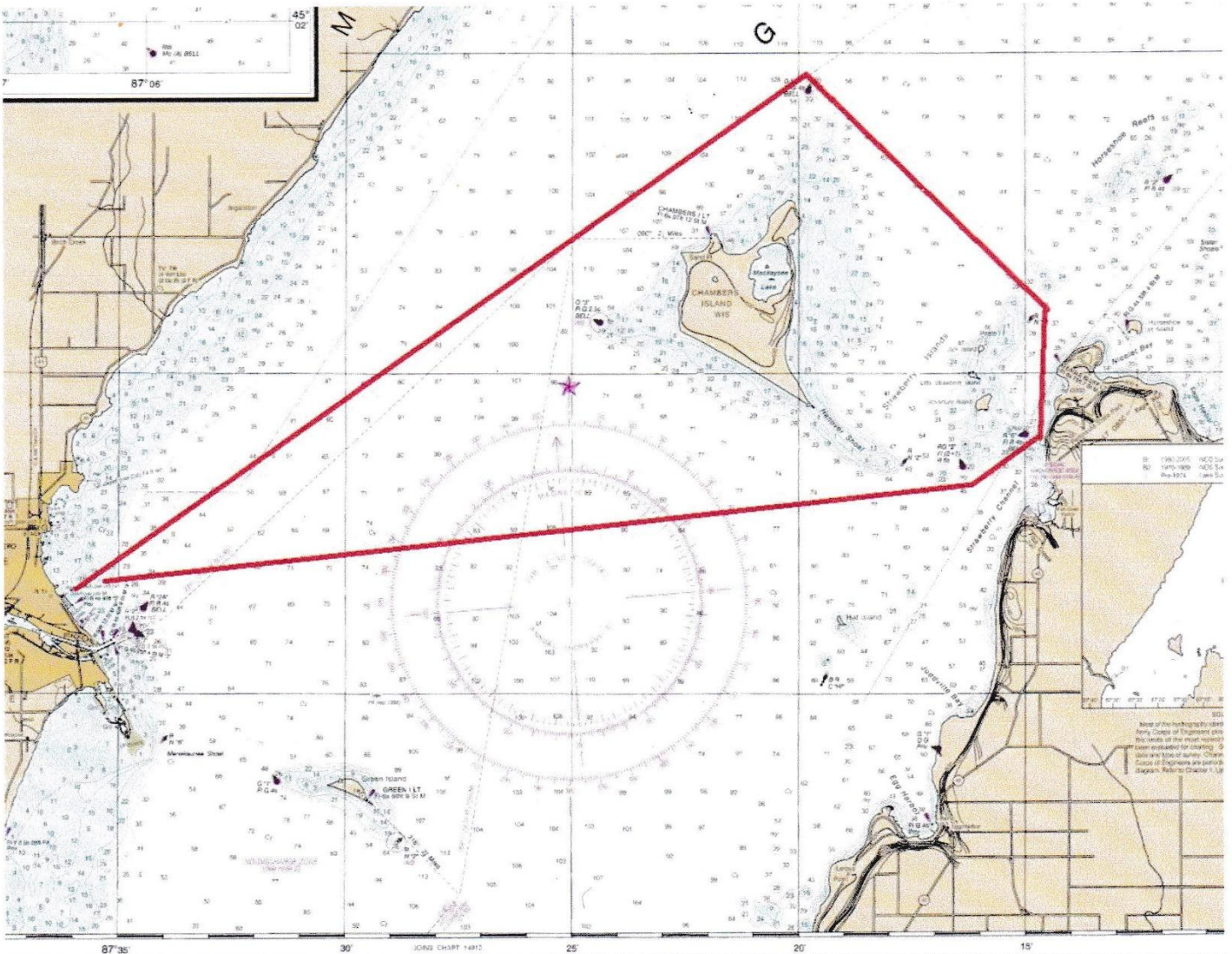


COURSE MAPS ARE APPROXIMATE REPRESENTATIONS. REFER TO THE COURSE DESCRIPTION FOR PROPER SAILING.



A2. Non-Spinnaker Yachts - 35.8 nm

- After the start, proceed to the western shore of Door County, leaving both Fish Creek Buoy RG “S” and R N “6” to Port. Take special care to avoid the shallows around Hanover Shoal and R N “2”
- Continue north to Eagle Bluff Buoy R “4”, leaving it to Port.
- Next, proceed northwesterly to the North Chambers Island Buoy G “1”, leaving both the island and the buoy to Port.
- Finally, proceed southwesterly to the finish as described in SI 8.

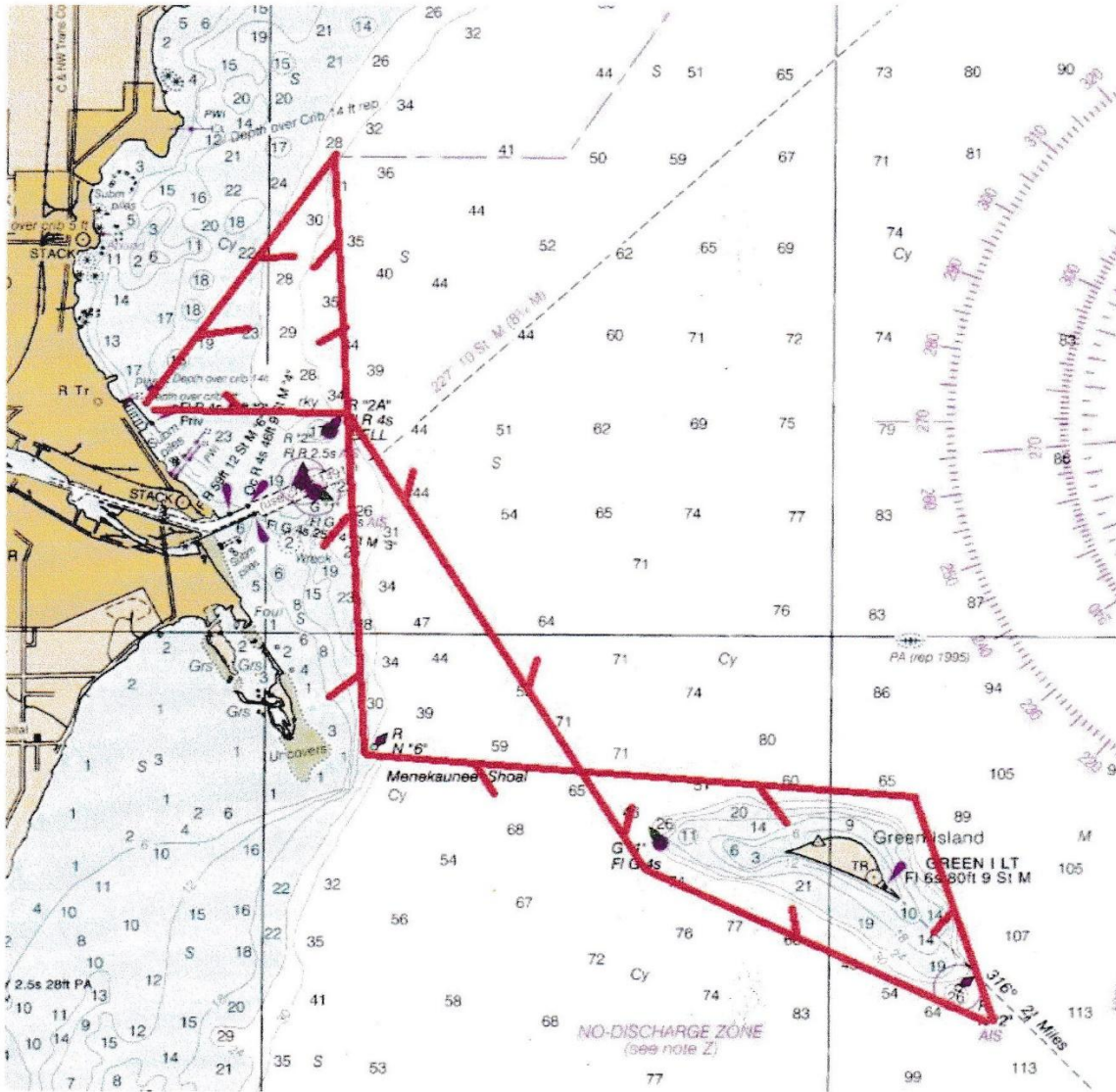


COURSE MAPS ARE APPROXIMATE REPRESENTATIONS. REFER TO THE COURSE DESCRIPTION FOR PROPER SAILING.



A3. Non-Spinnaker Small Boats – 17.0 nm

- After the start, proceed easterly to Menominee Shoal Buoy R “2A”, leaving it to Starboard.
- Next, proceed to Green Island West Shoal Buoy G “1”, and leave it to Port.
- Continue to round Green Island and its East Shoal Buoy R “1”, leaving both to Port.
- Proceed to Menekaunee Shoal Buoy R N “6”, and leave it to Starboard. Note the shallows between this mark and Seagull Bar.
- Next, proceed past Menominee Shoal Buoy R “2A” to the M&M YC Henes Park Buoy (45°08.136’ N, 087°34.465’ W), leaving both to Port.
- Finish as described in SI 8.



COURSE MAPS ARE APPROXIMATE REPRESENTATIONS. REFER TO THE COURSE DESCRIPTION FOR PROPER SAILING.