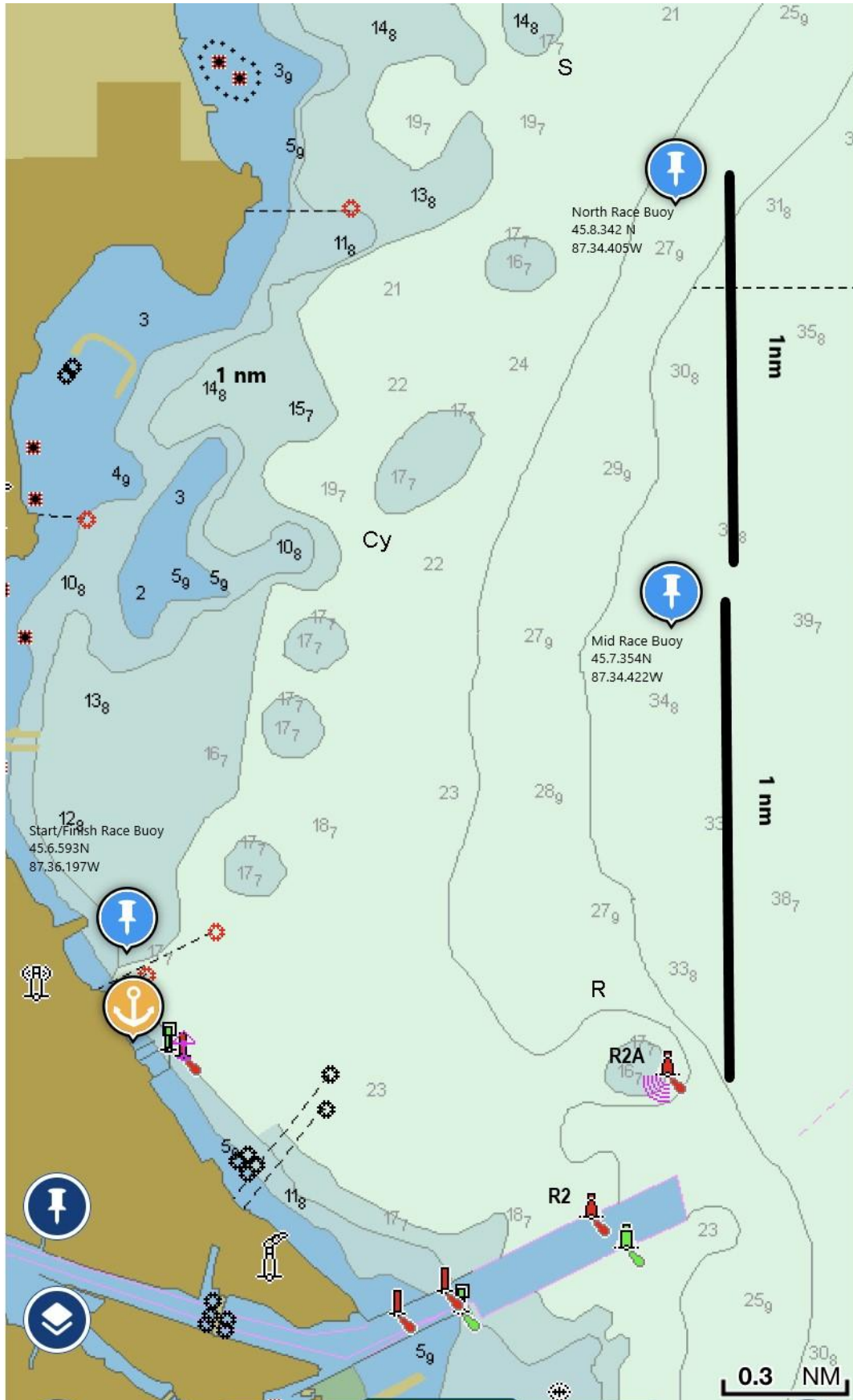
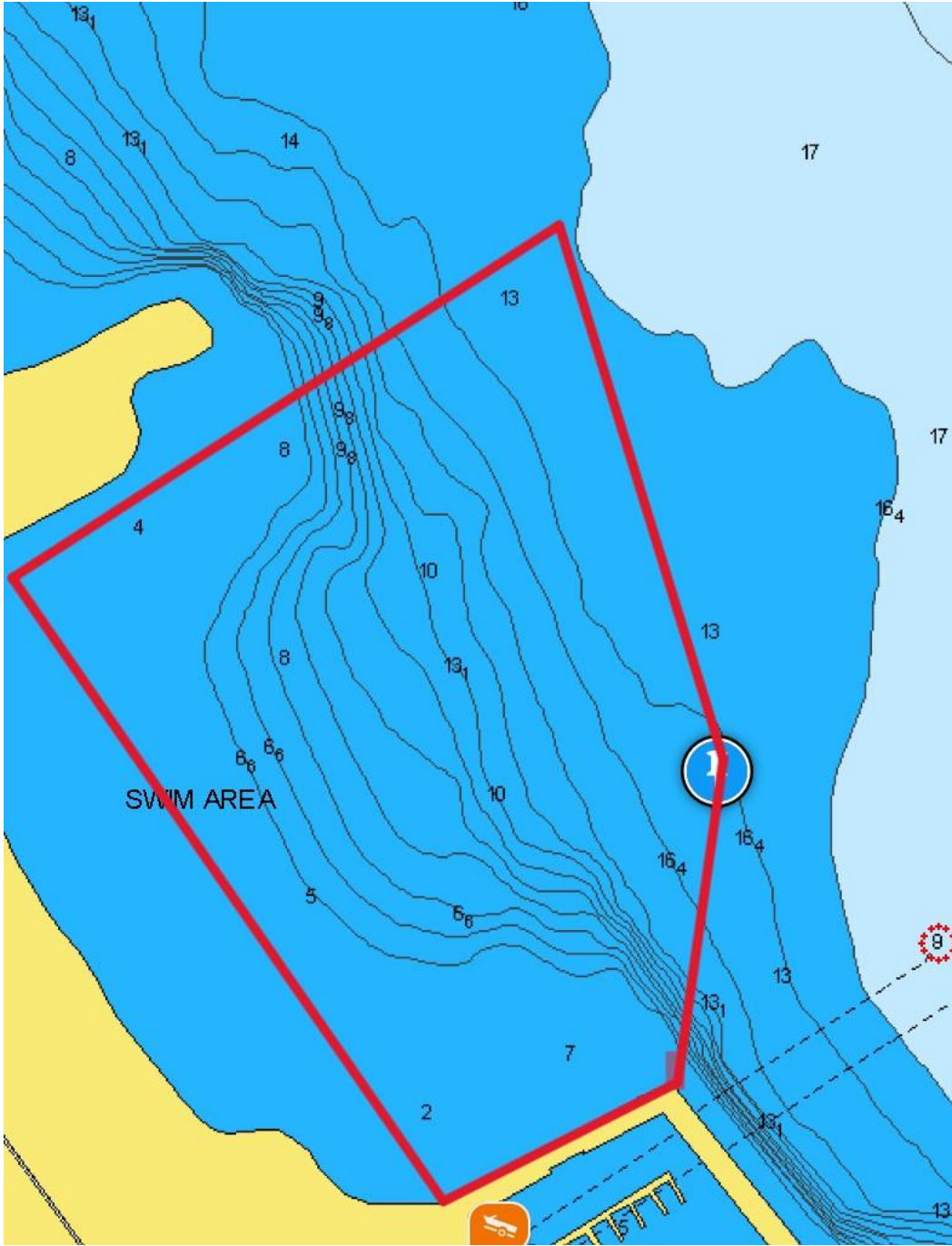


REFERENCE CHART



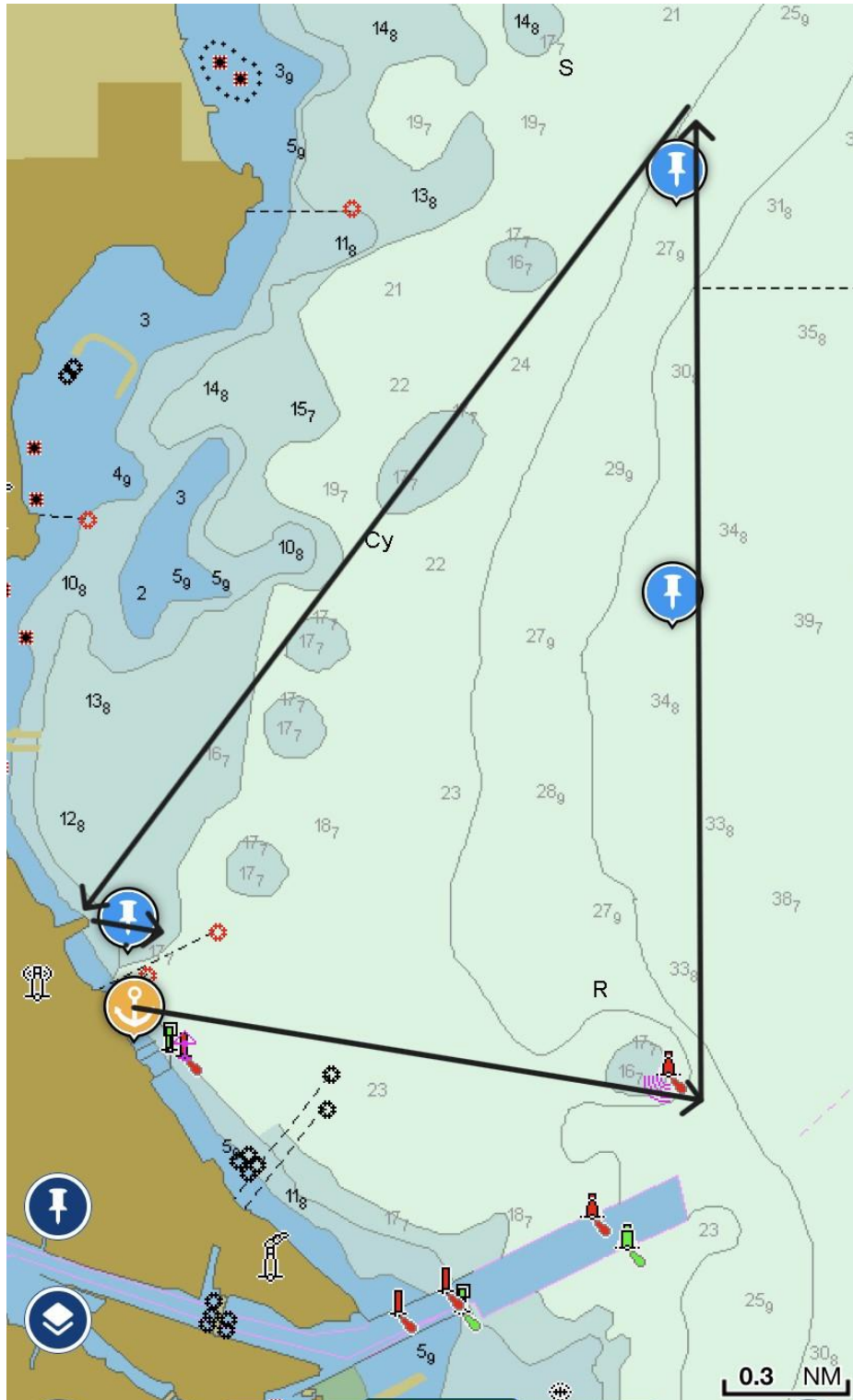
Starting Area



Course A

5.5 nm

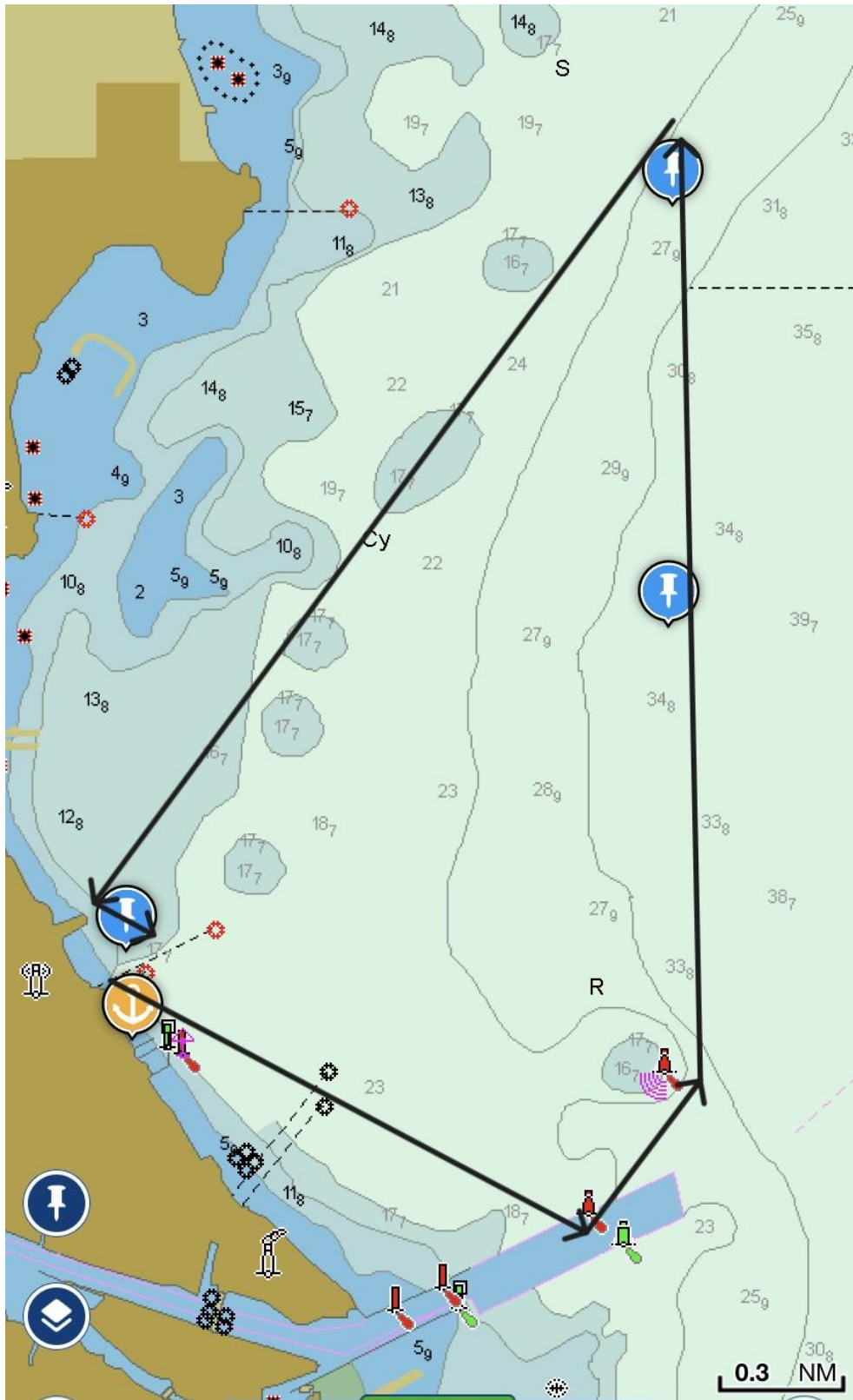
Start in a southerly direction. Proceed to R 2A, leaving mark to Port. Proceed to the M&M Yacht Club "Henes Park" buoy, leaving mark to port. Return to the start/finish line. Finish in a southerly direction, leaving M&M Yacht Club buoy to port.



Race Course B

5.8 nm

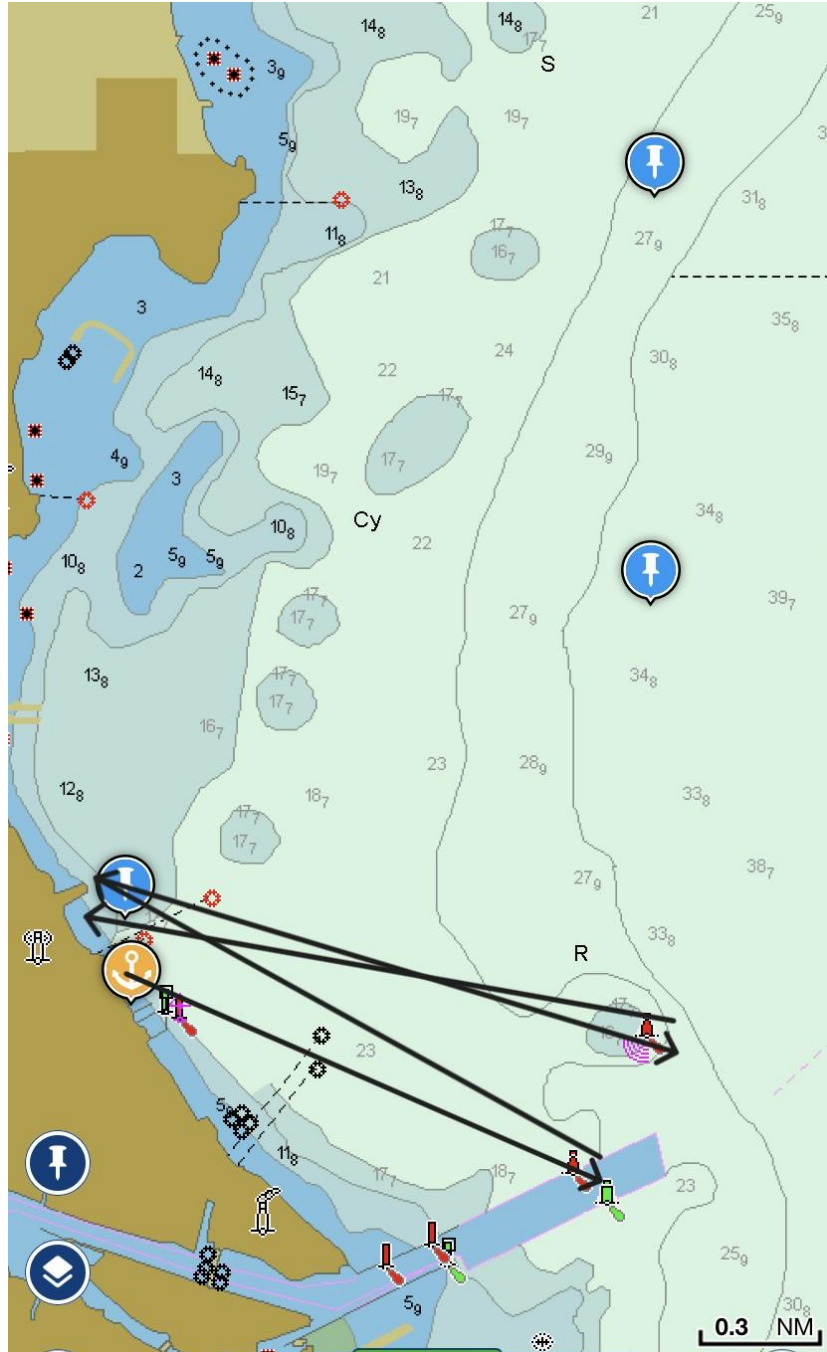
Start in a southerly direction. Proceed to R 2 - Menominee River RED entrance buoy, leaving mark to port. Proceed to R 2A, leaving mark to port. Proceed to the MMYC "Henes Park" buoy, leaving mark to port. Return to the start/finish line. Finish in a southerly direction, leaving MMYC buoy to port.



Race Course D

5 nm

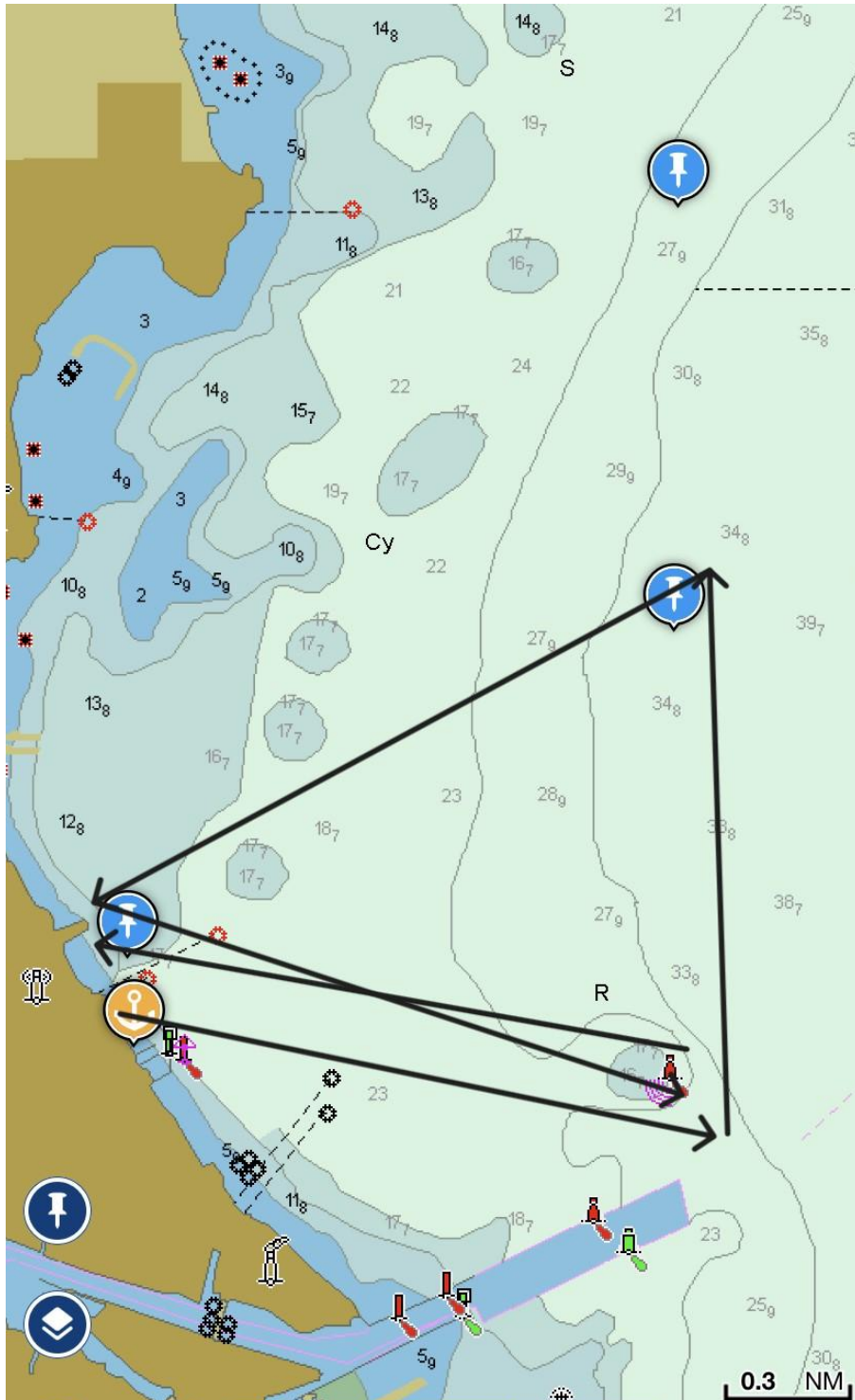
Start in a southerly direction. Proceed to R 2 - Menominee River Red entrance buoy, leaving mark to port. Return through the start/finish line, leaving M&M Yacht club buoy to starboard. Proceed to R 2A, leaving mark to port. Return to the start/finish line. Finish in a northerly direction, leaving MMYC buoy to starboard.



Race Course F

6.4 nm

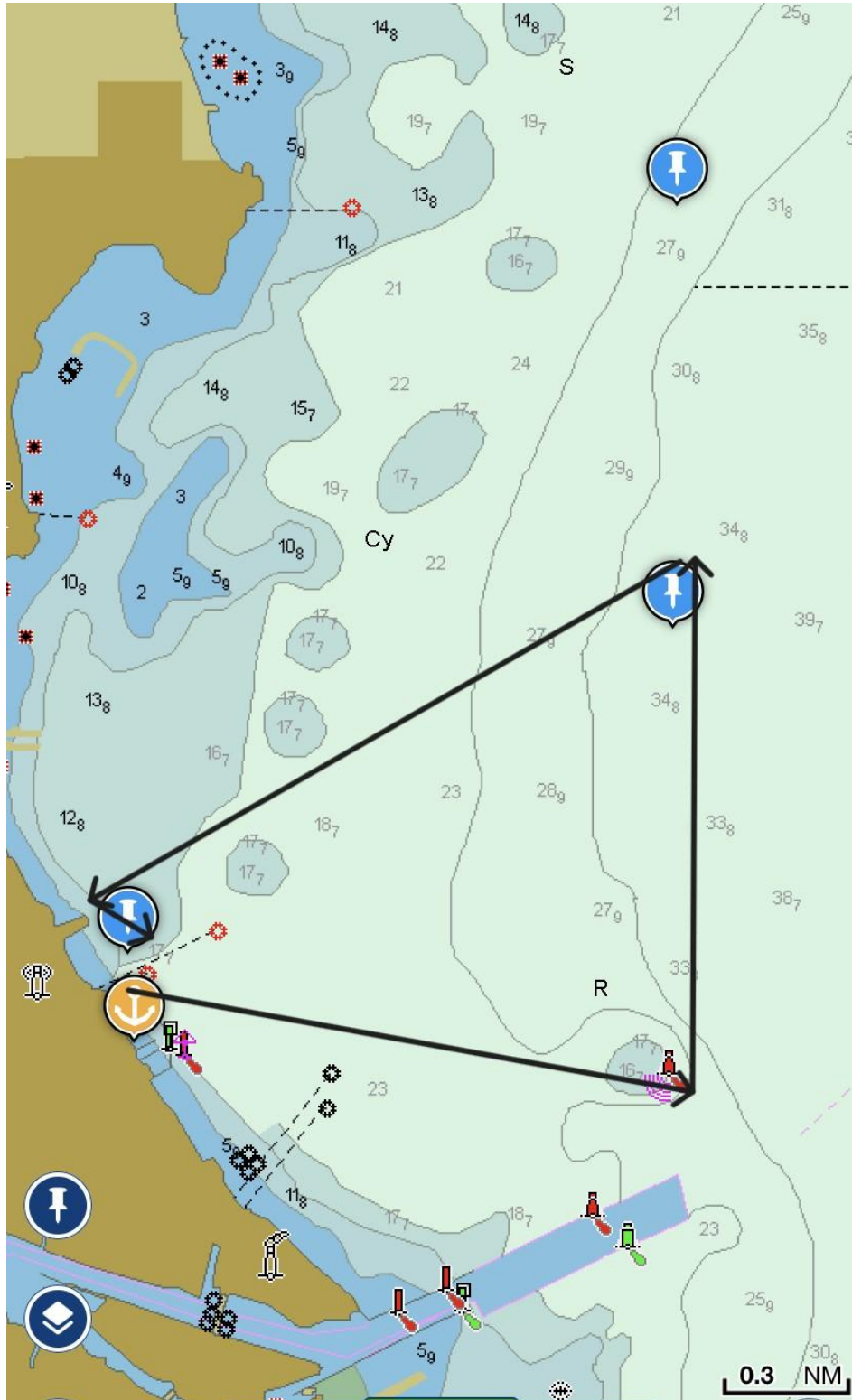
Start in a southerly direction. Proceed to R2A, leaving mark to port. Proceed to MMYC Mid Buoy to port. Proceed to Start/Finish Buoy leaving to port. Proceed to R “2A” leaving to port. Proceed to Start/Finish leaving to starboard south to north.



Race Course M

3.8 nm

Start in a southerly direction. Proceed to R 2A, leaving mark to Port. Proceed to the M&M Yacht Club "Midway" buoy, leaving mark to port. Return to the start/finish line. Finish in a southerly direction, leaving M&M Yacht Club buoy to port.



Race Course S

2.9 nm

Start in a southerly direction. Proceed to R2, leaving mark to port. Proceed to R "2A", leaving mark to port. Return through the start/finish line. Finish in a northerly direction, leaving MMYC buoy to starboard.

